

# SpaPak

## ELECTRIC SPA HEATER



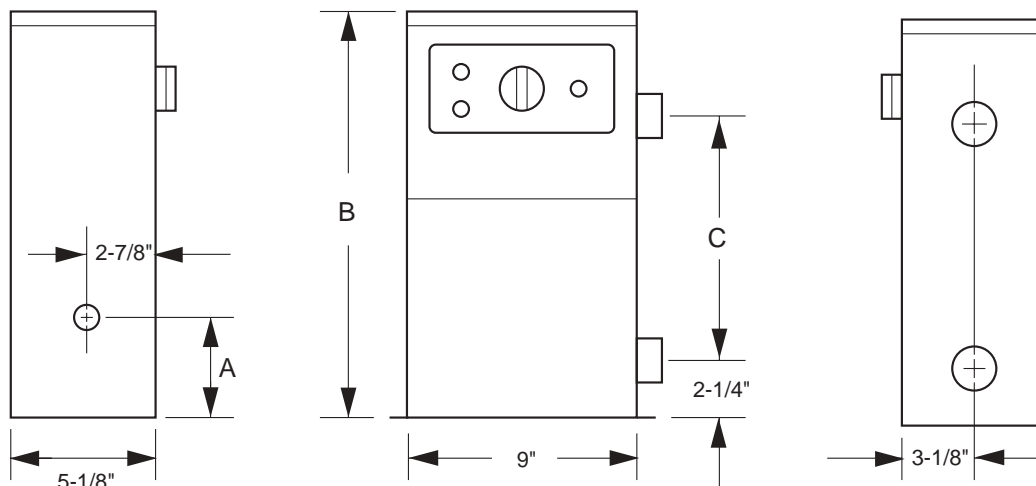
models

**552** and **1102**

- 5.5 and 11 kilowatt (@240 volts)
- 208/240 volt single phase
- User friendly control panel
- 100% all copper and bronze waterways
- Completely field serviceable
- Compact design with small footprint
- Long lasting Incoloy heating element
- Full size, full flow 1-1/2" connections
- Easy to install
- UL listed for indoor/outdoor installation
- Two-year limited warranty



# SPAPAK - 552 and 1102 Electric Spa Heater



LISTED  
774T



SPA  
HEATER

Model	A	B	C	Water Conn.	Voltage (Single Phase)	Shipping Weight (lbs)
552	3-7/8"	16"	8"	1-1/2"	208/240	26
1102	10-7/8"	23"	15"	1-1/2"	208/240	31



Type  
3R

Compare feature-for-feature with any other electric spa heater, and you'll see why SpaPak sets the standard for performance:

**Longer life** because all waterways are corrosion-free copper and bronze – not aluminum. And SpaPak features large, heavy-duty Incoloy heating elements that last far longer than ordinary water heating elements.

**Troublefree** because SpaPak has extra quality and safety built in: a pressure switch to prevent operation without water flow; a high-limit temperature control to prevent overheating; and, a dependable quality thermostat and contactor.

**Easy to install** with a compact design that fits into small spaces. Standard-size full flow 1-1/2" inlet and outlet connections are conveniently located. External current leak protectors are *not required*.

**Two-Year Limited Warranty** against defects in materials and workmanship (see written warranty for details). In addition, every SpaPak is thoroughly tested before shipment.

### How to Pick the Right Size Heater

The table below shows the heating capability for each model in temperature rise per hour with a given amount of water. For example, the model 1102 will raise the temperature of 450 gallons of water 10 °F in one hour. To determine the gallonage of your spa:

$$(\text{surface area}) \times (\text{average depth}) \times (7.5) = \text{spa gallons}$$

Model	Water Temperature Rise in ° F/Hour				
	5°	10°	15°	20°	25°
	Gallons of Water				
552	450	225	150	113	95
1102	900	450	300	225	190

Always cover your spa or hot tub when not in use to minimize heat loss and evaporation, and to decrease the time needed to heat water.



Raypak, Inc.

2151 Eastman Avenue, Oxnard, CA 93030, (805) 278-5300. Fax (800) 872-9725

Raypak Canada Limited

2805 Slough Street, Mississauga, Ontario, Canada L4T 1G2. (905) 677-7999. Fax (905) 677-8036

www.raypak.com